

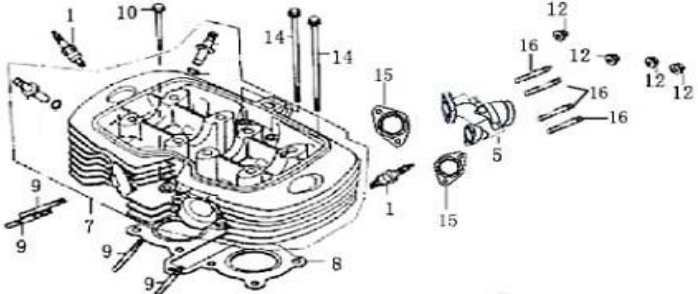
# LEGEND 250 TWIN II





Cylinder Head (ស្រទាប់)

LEG250 - 02

PICTURE	NO	Model	GPX CODE	ENGLISH DESCRIPTION	QTY (PCS)
	1		250-02-0101	Plug, spark	2
	5		250-02-0501	Pipe, inlet	1
	7		250-02-0701	Head comp., cylinder	1
	7	NEW	250-02-0702	Head comp., cylinder	1
	8		250-02-0801	Gasket, cylinder head	1
	9		250-02-0901	Stud, M8×45	4
	10		250-02-1001	Bolt, M6×65	1
	12		250-02-1201	Nut, M6	4
	14		250-02-1401	Bolt, M6×145	2
	15		250-02-1501	Insulator	2
	16		250-02-1601	Bolt	4

### Camshaft & Valve (เฟลาตุ๊กเบี้ยว & ชุดวาล์ว)

**LEG250 - 03**

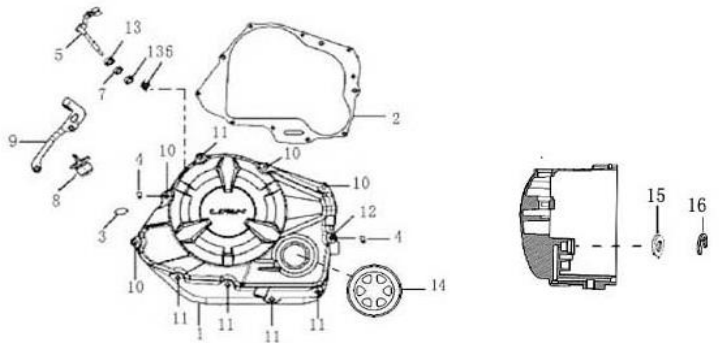
PICTURE	NO	Model	GPX CODE	ENGLISH DESCRIPTION	QTY (PCS)
	1		250-03-0101	Retainer, valve spring	4
	2		250-03-0201	Seat, valve spring outer	4
	3		250-03-0301	Oil stem	4
	4		250-03-0401	Split cone, valve	8
	5		250-03-0501	Dowel pin, 10×16	2
	6		250-03-0601	Washer, steel, 8	8
	7		250-03-0701	Bush, camshaft	2
	7		250-03-0702	NEEDLE BEARING, CAMSHAFT	2
	8		250-03-0801	Rocker arm assy.	4
	10		250-03-1001	Shaft, rocker arm	4
	11		250-03-1101	Holder, rocker arm	2
	14		250-03-1401	Spring, rocker arm	4
	15		250-03-1501	Dowel pin, 10×28.7	2
	16		250-03-1601	Valve, intake	2
	17		250-03-1701	Valve, exhaust	2
	18		250-03-1801	Spring, inner valve	4
	19		250-03-1901	Camshaft	1
	19		250-03-1902	Camshaft	1
	20		250-03-2001	Spring, outer valve	4
	21		250-03-2101	Nut, M8	8
	22		250-03-2201	Snap ring, 20	1
	23		250-03-2301	Washer, camshaft, 20	1





**Right Crankcase Cover (ฝาครอบคลัทช์)**

**LEG250 - 06**

PICTURE	NO	Model	GPX CODE	ENGLISH DESCRIPTION	QTY (PCS)
	1		250-06-0101	Cover, crankcase, RH	1
	2		250-06-0201	Gasket, crankcase cover, RH	1
	3		250-06-0301	O-ring, dipstick, 18×3	1
	4		250-06-0401	Dowel pin, 8×16	2
	5		250-06-0501	Lever, clutch operating	1
	6		250-06-0601	Spring, clutch operating lever	1
	7		250-06-0701	Oil seal, 12×18×5	1
	8		250-06-0801	Dipstick	1
	9		250-06-0901	Stay, clutch cable adjusting	1
	10		250-06-1001	Bolt, M6×40	4
	11		250-06-1101	Bolt, M6×50	5
	12		250-06-1201	Bolt, M6×95	1
	13		250-06-1301	Bearing, needle, 12160	2
	14		250-06-1401	Oil observation window	1
	15		250-06-1501	Oil seal	1
	16		250-06-1601	O-ring	1



Clutch (ชุดคลัทช์โบลท์ยึด 4 ตัว)

LEG250 - 07

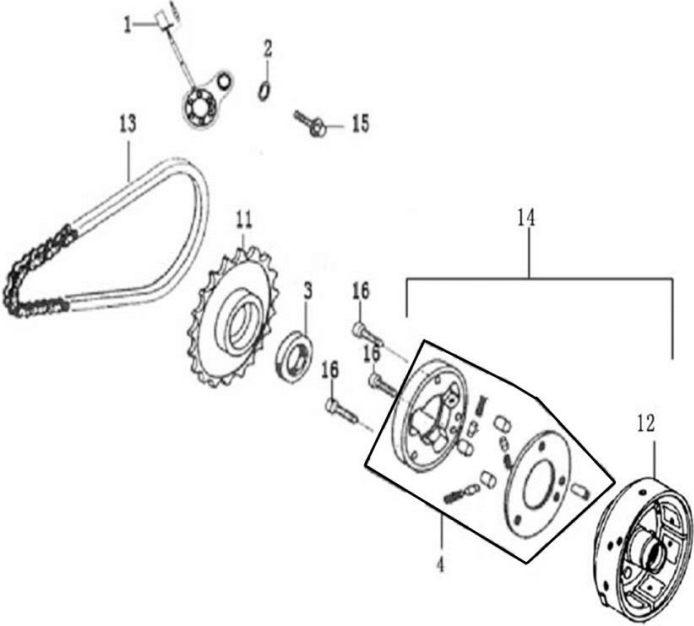
PICTURE	NO	Model	GPX CODE	ENGLISH DESCRIPTION	QTY (PCS)
	1		250-07-0101	Bolt, clutch	1
	2		250-07-0201	Washer, clutch	1
	3		250-07-0301	Washer, spline	1
	4		250-07-0401	Locknut, M16	1
	5		250-07-0501	Washer	1
	6		250-07-0601	Rod, push	1
	7		250-07-0701	Bearing, thrust	1
	11		250-07-1101	Main body, clutch	1
	12		250-07-1201	Disk comp., drive	1
	13		250-07-1301	Disk comp., driven	1
	14		250-07-1401	Plate comp., drive	6
	15		250-07-1501	Plate, driven	6
	16		250-07-1601	Spring, clutch	1
	17		250-07-1701	Seat, spring washer	1
	18		250-07-1801	Bush	1
	19		250-07-1901	Plate, pressing	1
	20		250-07-2001	Spring, clutch	4
	21		250-07-2101	Bolt, M6×22-Zn c1A	4
	22		250-07-2201	Bearing, needle, AXK1226	1





Starting Clutch (ชุดคลัทช์สตาร์ท)

LEG250 - 08

PICTURE	NO	Model	GPX CODE	ENGLISH DESCRIPTION	QTY (PCS)
	1		250-08-0101	Indicator, gear	1
	2		250-08-0201	O-ring, lower rocker arm	1
	3		250-08-0301	Oil seal, LH, 22×31×5	1
	4		250-08-0401	Starting clutch Assy	1
	11		250-08-1101	Sprocket comp., starting clutch	1
	12		250-08-1201	Rotor set	1
	13		250-08-1301	Chain, starting	1
	14		250-08-1401	Rotor Assy., clutch	1
	15		250-08-1501	Bolt, M6×20-Cr mc	1







Starting Motor (มอเตอร์สตาร์ท)

LEG250 - 12

PICTURE

NO

Model

GPX CODE

ENGLISH DESCRIPTION

QTY

(PCS)

1

250-12-0101

Motor assy., starting

1

2

250-12-0201

Sprocket, small

1

3

250-12-0301

Wire harness, starting motor

1

4

250-12-0401

O-ring

1

5

250-12-0501

Bolt, M6x25

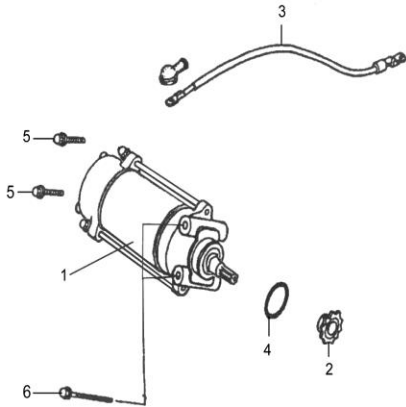
2

6

250-09-1401

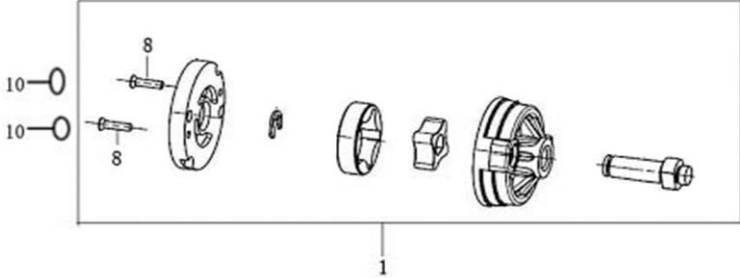
Bolt, M6x65

2



Oil Pump (ปั๊มน้ำมันเครื่อง)

LEG250 - 13

PICTURE	NO	Model	GPX CODE	ENGLISH DESCRIPTION	QTY (PCS)
	1		250-13-0101	Pump assy., oil	1
	8		250-13-0801	Screw, M3x12-Cr me	2
	10		250-13-1001	O-ring	2







Shaft & Countershaft (ชุดเพลาขับ เพลาลตาม)

LEG250 - 16

PICTURE	NO	Model	GPX CODE	ENGLISH DESCRIPTION	QTY (PCS)
	1		250-16-0101	Shaft comp., main	1
	2		250-16-0201	Shaft set, main	1
	3		250-16-0301	Sleeve, main shaft	1
	4		250-16-0401	Countershaft comp.	1
	5		250-16-0501	Countershaft	1
	6		250-16-0601	Sleeve, countershaft	1
	7		250-16-0701	Sprocket comp., output 520-13T	1
	8		250-16-0801	Bush, countershaft gear, 1st	1
	9		250-16-0901	Washer, starting idler gear	1
	10		250-16-1001	Bush, main shaft gear, 6th	2
	11		250-16-1101	Circlip I, countershaft	1
	12		250-16-1201	Washer, countershaft	1
	13		250-16-1301	Washer I, inner spline	1
	14		250-16-1401	Washer II, inner spline	1
	15		250-16-1501	Gear, main shaft, 2nd	1
	16		250-16-1601	Gear, main shaft, 3rd	1
	17		250-16-1701	Gear, main shaft, 5th	1
	18		250-16-1801	Gear, main shaft, 6th	1
	19		250-16-1901	Gear, countershaft, 1st	1
	20		250-16-2001	Gear, countershaft, 2nd	1
	21		250-16-2101	Bush, countershaft gear, 2nd	1
	22		250-16-2201	Gear, countershaft, 3rd	1
	23		250-16-2301	Gear, countershaft, 4th	1
	24		250-16-2401	Gear, countershaft, 5th	1
	25		250-16-2501	Gear, countershaft, 6th	1
	26		250-16-2601	Plate, output sprocket fixing	1
	27		250-16-2701	Circlip, main shaft	2
	28		250-16-2801	Washer, main shaft	1
	29		250-16-2901	Washer, inner spline	2
	30		250-16-3001	Washer II, countershaft	2
	31		250-16-3101	Oil seal, countershaft	1
	32		250-16-3201	Bolt, M6×10-Zn c1A	2





บังค้ำบเลี้ยว (HANDLE BAR & REAR MIRROR)

LG250 2020-20

PICTURE	NO	Version	GPX CODE	ENGLISH DESCRIPTION	QTY	UNIT
					(PCS)	
	1	2020	250-20-0102	Handlebar Balance Hammer	2	PCS
	2		250-20-0202	HANDLE GRIPS LH.	1	PCS
	3		250-20-0302	SWITCH ASSY LH.	1	PCS
	3.1		250-20-1001	PAN HEAD SCREWS WITH CROSS	1	PCS
	3.2		250-20-1101	PAN HEAD SCREWS WITH CROSS	1	PCS
	4		LEG-16-13	CLUTCH LEVER LH.	1	SETS
	4.1		250-20-4.102	CLUTCH LEVER ONLY LH.	1	PCS
	4.2		250-20-0601	PIN SHAFT	1	PCS
	4.3		250-20-0701	ALL-METAL HEXAGONAL LOCKING	1	PCS
	4.4		250-20-0801	CLUTCH LEVER HOLDER	1	PCS
	4.5		250-20-1201	HEXAGONAL FLANGE	2	PCS
	5.1	2020	250-20-05.102	LH Side mirror	1	PCS
	5.2	2020	250-20-05.202	RH Side mirror	1	PCS
	6	2020	250-20-0602	Handle bar	1	PCS
	7		250-20-0702	HEXAGON SOCKET HEAD CAP	4	PCS
	8		250-20-0802	HANDLE RISER UPPER	1	PCS
	9.1		250-20-9.102	HANDLE RISER HOLDER		PCS
	9.2		250-20-9.202	WASHER Φ12	2	PCS
	9.3		250-20-9.302	WASHER Φ8	2	PCS
	9.4		250-20-9.402	ALL-METAL HEXAGONAL FLANGE	2	PCS
	10		250-20-1002	HANDLE RISER HOLDER OF RUBBER	4	PCS
	11	ALL TWIN	253-20-1101	FRONT BRAKE PUMP WITH BRAKE LEVEL	1	PCS
	11.1	ALL TWIN	253-20-1101-1	FRONT BRAKE PUMP	1	PCS
	11.2	ALL TWIN	253-20-1101-2	FRONT BRAKE LEVER	1	PCS
	11.3		250-20-1201	HEXAGONAL FLANGE BOLT,M6×25,GB/T	2	PCS
	12		250-20-1202	SWITCH ASSY RH.	1	PCS
12.1		250-20-1101	PAN HEAD SCREWS WITH CROSS RECESS	1	PCS	
12.2		250-20-1801	PAN HEAD SCREWS WITH CROSS RECESS	1	PCS	





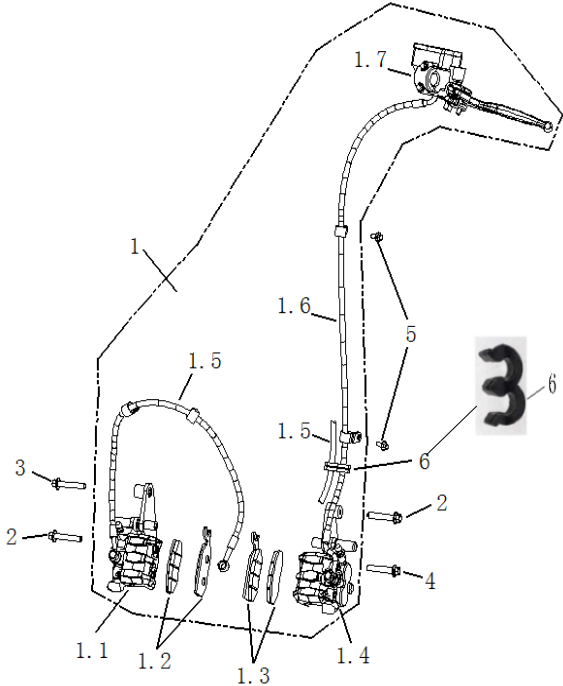






เบรคหน้า (FRONT BRAKE PUMP)

LG250 2020-24

PICTURE	NO	Version	GPX CODE	ENGLISH DESCRIPTION	QTY (PCS)	UNIT
	1	2020	250-24-0102	Front Brake assy	1	PCS
	1.1		LEG200-20-01-02	Front Break house LH lower	1	PCS
	1.2		LEG200-20-06-TH	LH break shoe	1	SETS
	1.3		LEG-20-07-TH	RH break shoe	1	SETS
	1.4		LEG-20-01-03	Front Break house RH lower	1	PCS
	1.5		LEG200-20-01-05	Oil break bump pipe, connector	1	PCS
	1.6	2020	250-24-01.602	Front break bump pipe	1	PCS
	2		LEG-20-02	Hexagonal flange bolt M8×45	2	PCS
	3		LEG-20-03	Hexagonal flange bolt M8×50	1	PCS
	4		LEG-20-04	Hexagonal flange bolt M8×40	1	PCS
	5		250-19-2301	Hexagonal flange bolt M6×12	1	PCS
	6		250-24-0601	Break bump clip	1	PCS



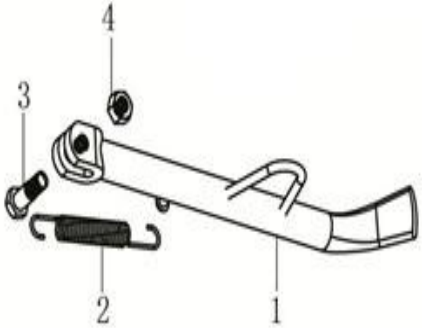






## ขาตั้งข้าง (SIDE SUPPORT)

LG250 2020-28

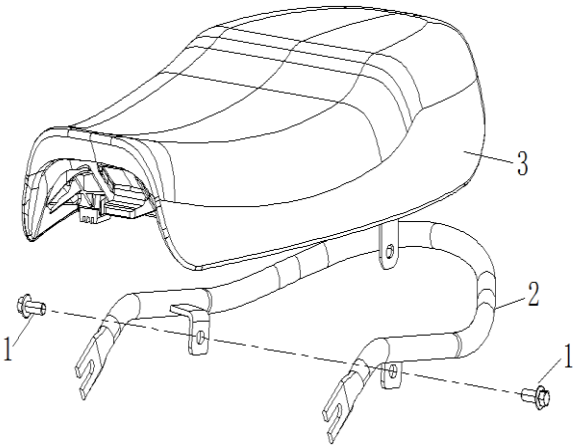
PICTURE	NO	Version	GPX CODE	ENGLISH DESCRIPTION	QTY ( PCS	UNIT
	1		LEG-24-01	Side Stand	1	PCS
	2		LEG-24-02	Side Stand spring	1	PCS
	3		250-28-0301	Step bolt M10×1.25×18/Φ12×16	1	PCS
	4		LEG-28-02	Hexagon nut M10×1.25	1	PCS





រូប (SEAT & SEAT COVER)

LG250 2020-31

PICTURE	NO	Version	GPX CODE	ENGLISH DESCRIPTION	QTY (PCS)	UNIT
	1		LEG-27-06	Hexagonal flange bolt M8×20	2	PCS
	2		250-31-0201	Rr. Arm rest	1	PCS
	3		250-31-0301-BLK	Seat assy black color	1	PCS





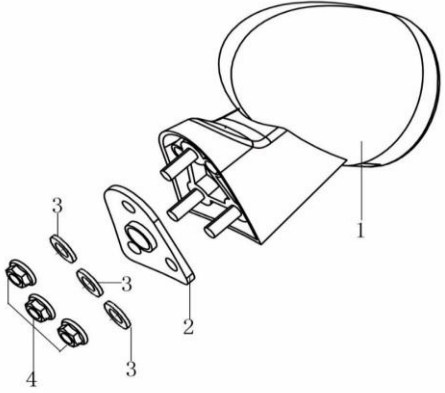






ไฟท้าย (TAIL LIGHT)

LG250 2020-36

PICTURE	NO	Version	GPX CODE	ENGLISH DESCRIPTION	QTY (PCS)	UNIT
	1		250-36-0101	Tail light	1	PCS
	2		250-36-0201	Rubber for tail light	1	PCS
	3		LEG-19-11	Washr Ø6	3	PCS
	4		LEG-29-14	Hexagon flange Nut M6, GB6177-2000	3	PCS

โครงตัวถัง (FRAME & FOOTREST)

LG250 2020-37

PICTURE	NO	Version	GPX CODE	ENGLISH DESCRIPTION	QTY (PCS)	UNIT
	1		250-37-0101	FRAME CBU WITH	1	PCS
	3		LEG-19-04	BOLT M6X10	2	PCS
	4.1		250-37-04.102	HORN BRACKET ONLY	1	PCS
	4.2		250-37-0401-H-TH	ALTHORN E-MARK HIGH	1	PCS
	4.3		250-37-0401-L-TH	SACKBUT E-MARK LOW	1	PCS
	5		LEG-35-02	BOLT M6X16	1	PCS
	6		250-37-0601	ENGINE CONNECT PLATE UPPER	2	PCS
	7		250-37-0701	ALL-METAL HEXAGONAL FLANGE	8	PCS
	8		250-37-0801	ENGINE CONNECT PLATE B	1	PCS
	9		250-37-0901	ENGINE CONNECT PLATE FR.	2	PCS
	10		250-37-1001	HEXAGON HEADED BOLT M8×65	3	PCS
	11		250-37-1101	HEXAGON HEADED BOLT M8×90	4	PCS
	12		250-37-1201	PLUG 007000	4	PCS
	13		LEG-33-13	SIDE COVER RUBBER	4	PCS
	14		LEG-33-14	FR. FOOTREST LH	1	PCS
	15		LEG-33-15	FR. FOOTREST RH	1	PCS
	16		LEG-33-16	RR. FOOTREST ASSY RH.	1	PCS
	17		LEG-33-17	RR. FOOTREST ASSY RH.	1	PCS
	18		LEG-33-18	HEXAGON HEADED BOLT M10×1.25×30	4	PCS
	19		LEG-33-19	BOLT M10X16 #13	1	PCS
	20		250-37-2001	BRACKET FOR BATTERY	1	PCS
	21		601-39-0801-TH	BATTERY	1	PCS
	22		CR5-38-16	BATTERY TAPE	1	PCS
	23		LEG-33-23	HEXAGON HEADED BOLT M6×30	2	PCS
	25		250-37-2501	TOOL BOX	1	PCS



คาร์บูเรเตอร์, ออยคูลเลอร์ ( CARBURATOR, OIL COOLER )

LG250 2020-38

PICTURE	NO	Version	GPX CODE	ENGLISH DESCRIPTION	QTY ( PCS )	UNIT
	1		250-38-0101	ENGINE ASSY 250	1	SETS
	2		250-38-0201	GASKET	2	PCS
	3		250-38-0301	HEXAGON HEADED BOLT M6×30	4	PCS
	4		250-38-0401	AIR INTAKE PIPE	1	PCS
	5		250-38-0501	CLAMP 051000	1	PCS
	6		250-38-0601	INJECTOR	2	PCS
	7		250-38-0701	OIL INJECTOR RAIL	1	PCS
	8		250-38-0801	HEXAGON SOCKET HEAD CAP	2	PCS
	9		250-38-0901	THROTTLE BODY ASSY	1	PCS
	10		250-38-1001	CLAMP 050000	3	PCS
	11		250-38-1101	HEXAGON HEADED BOLT M6×20	3	PCS
	12		LEG-35-02	BOLT M6X16	6	PCS
	13		250-38-1301	WASHER 10, COPPER	4	PCS
	14		250-38-1401	OIL COOLER PIPE I	1	PCS
	15		250-38-1501	OIL COOLER PIPE II	1	PCS
	16		250-38-1601	OIL COOLER SPECIAL BOLT	2	PCS
	17		LEG200-34-17	OIL COOLER O SEAL	2	PCS
	18		LEG200-34-18	FLANGE BUSH	3	PCS
	19		LEG200-34-19	H RUBBER	3	PCS
	20		250-38-2001	OIL COOLER	1	PCS
	21		250-38-2101	EXHAUST GAS RECOVERY DEVICE	1	PCS
	22		250-38-2201	OIL PIPE CLIP	6	PCS
	23		250-38-2301	DRIVING SPROCKET COVER	1	PCS
	24		250-38-2401	DRIVING SPROCKET COVER BOLT	2	PCS
	25		250-38-2501	HEXAGON HEADED BOLT M10×115×1.25	2	PCS
	26		250-38-2601	WASHR Φ10	2	PCS
	27		250-30-0501	ALL-METAL HEXAGONAL FLANGE LOCK	2	PCS
	28		250-38-2801	GEAR SHAFT PEDAL	1	PCS
	29		250-38-1101	HEXAGON HEADED BOLT M6×20	1	PCS

คาร์บูเรเตอร์, ออยคูลเลอร์ ( CARBURATOR, OIL COOLER )

LG250 2020-38

PICTURE	NO	Version	GPX CODE	ENGLISH DESCRIPTION	QTY (PCS)	UNIT
	30		250-38-3001	WASHER $\Phi 12 \times \Phi 20 \times 2$	1	PCS
	31		250-38-3101	EXTERNAL CIRCLIPS $\Phi 12$	1	PCS
	32		250-38-3201	TUBE -FUEL A	1	PCS
	33		250-38-3301	FUEL FILTER	1	PCS
	34		250-38-3401	TUBE -FUEL B	1	PCS
	35		250-38-3501	QUICK FIT CONNECTOR	1	PCS
	36		250-38-3601	CLIP	1	PCS
37		250-38-3701-TH	DUST SEAL	2	PCS	





